

# **Assist device to demount/mount tire**

---

**390 helper**  
**H-80-1000000**

**Installation instruction**

**Note: this assist device is suitable for the 887 and 885 series machine manufactured by BRIGHT Company.**

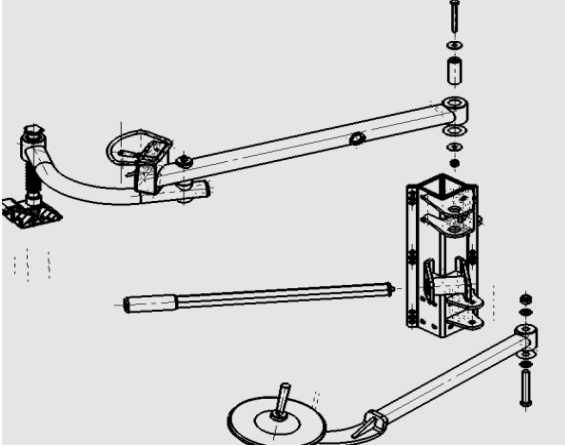
**Installation step as follows:**



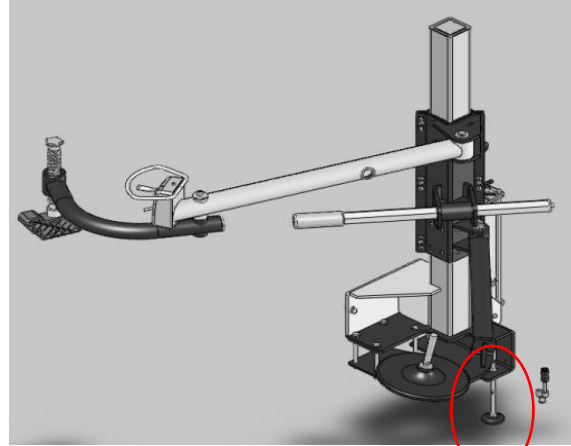
**Must cut off the power supply and air source before installation.**

1. Unpack the box and clean all the spare part to prepare installation. Fix the press arm and lift arm to the slide plate then tighten the screws. Insert the hexagonal press shaft into the hexagonal bushing. The appearance of the helper after assembly like the picture showing in FIG2.

Note: must assemble the fulcrum support before install the helper onto the machine.

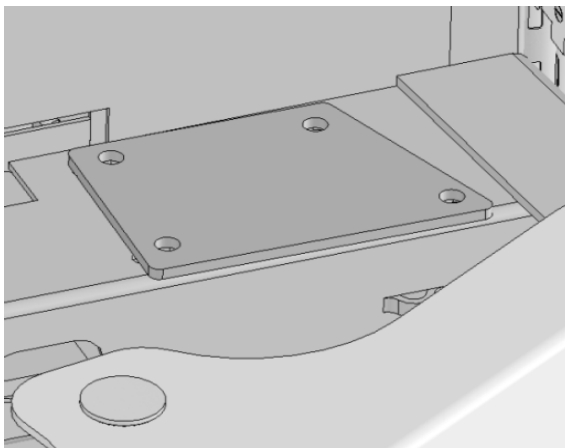


(FIG 1)

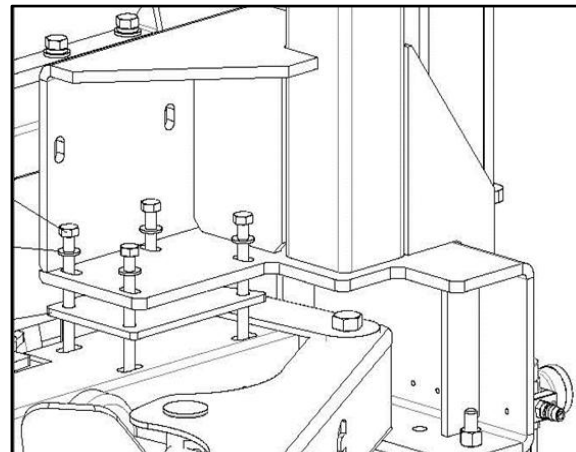


(FIG 2)

2. Put the base plate on the side support of the machine like FIG3. Put the helper assembly on the base plate like FIG4 then align the each four holes on the bottom of the helper and the base plate and the machine and insert the four M10X130 screws with  $\Phi 10$  flat washer through all the holes like FIG4.

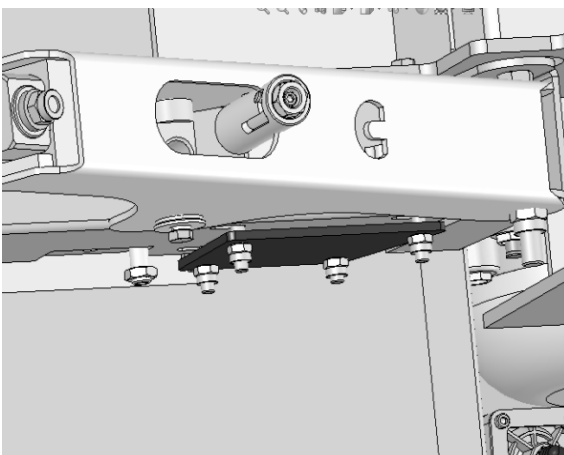


(FIG 3)

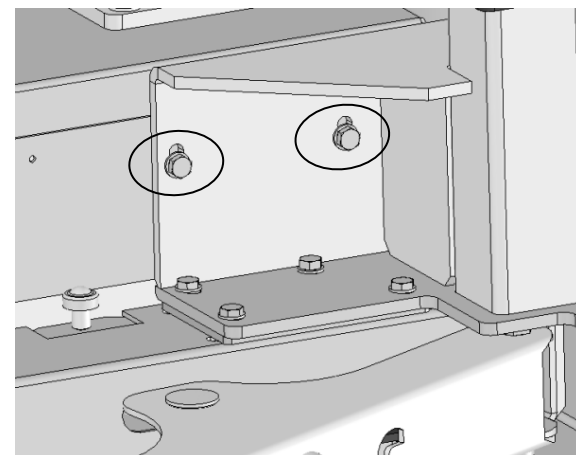


(FIG 4)

3. Add the other base plate under the side support through the four screws then tighten them with four M10 lock nuts like FIG5. Fix the side of helper to the machine side with two M10X30 bolts with two  $\Phi 10$  flat washers then tighten them like FIG6.



(FIG 5)

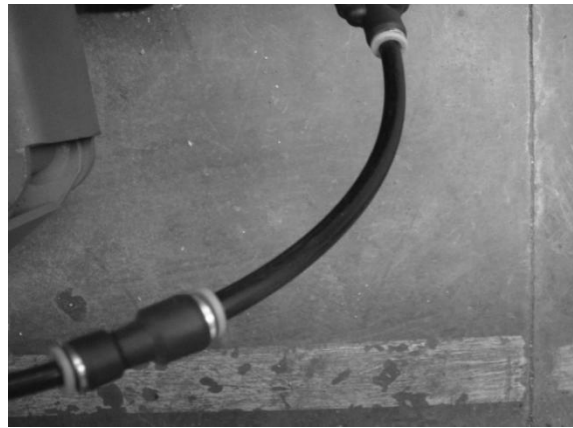


(FIG 6)

4. Remove the PU hose from the insert elbow on the air regulator. Connect the Y union and the insert elbow on the air regulator with another short PU hose; connect the PU hose from the inner machine to Y union; connect the last port of the Y union and the convertor union of the helper with another long PU hose like FIG8.



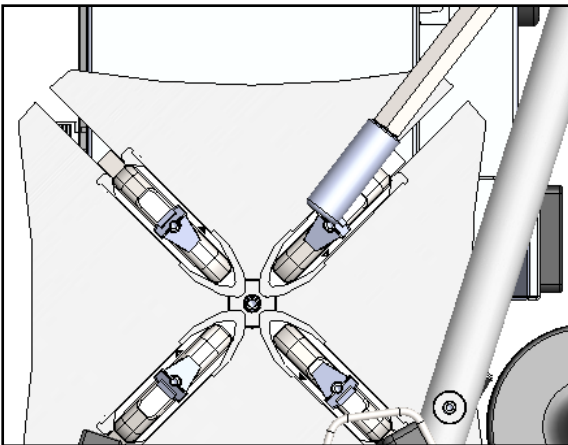
(FIG 7)



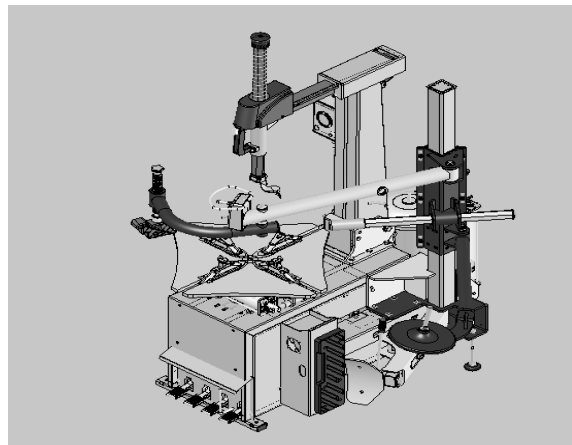
(FIG 8)

5. After assemble the helper to the machine, check if the extending line of the press shaft can align the center of the turntable like FIG9. If not, adjust the screws in the FIG5 and FIG6 back and forth to ensure the alignment like FIG9.

The picture FIG10 shows the 390 helper on the machine after installation.



(FIG 9)



(FIG 10)

6. Press the rod of the control valve upward, the helper runs upward and Press the rod of the control valve downward, the helper runs downward like FIG11.



(FIG 11)